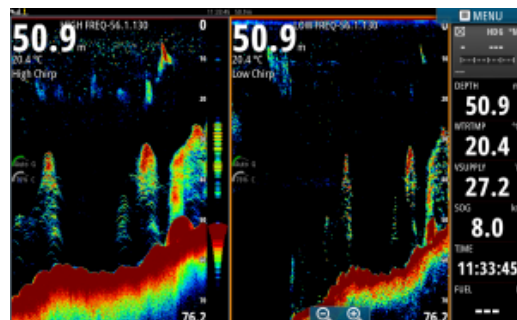
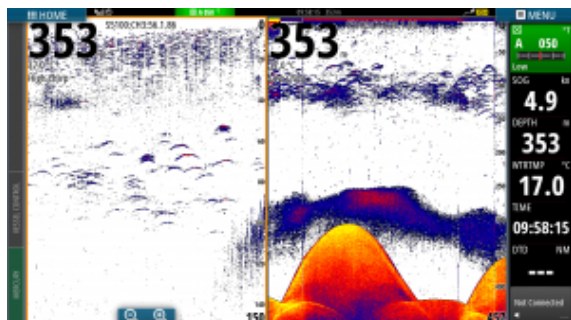


## S5100 Sonar Module

1,999.00



## Specifications

### Boat Details

Price	1,999.00	Boat Brand	Lowrance
Model	S5100 SONAR MODULE	Length	0.00
Year	2021	Category	Boat Parts and Accessories
Hull Style	Other	Hull Type	Other
Power Type	Other	Stock Number	2-000-13260-001
Condition	New	State	New South Wales
Suburb	MCGRATHS HILL	Engine Make	

### Disclaimer

Our company offers the details of this vessel in good faith but cannot guarantee or warrant the accuracy of this information nor warrant the condition of the vessel. A buyer should instruct his agents and/or surveyors to investigate such details buyer desires validated. This vessel is offered subject to prior sale, price change or withdrawal without notice.

## Description

### Up to Three Transducers for Ultimate Visibility

The S5100 is our first sounder module to feature three fully independent sonar channels, delivering true simultaneous coverage of up to three different depth ranges with uncompromising performance at every range. Connect three single-channel transducers, or pair one dual-channel and one single-channel, to create the perfect sonar coverage for the areas you fish and the species you target. Because all three sonar channels are completely independent, different frequency ranges can be viewed simultaneously a split-screen layout on a single display.

### Sharper Target Resolution, Wider Coverage

CHIRP technology uses frequency-swept pulses to provide improved target resolution and noise rejection compared to traditional single-frequency sonar. With the S5100's advanced CHIRP technology, you'll see clear to the bottom with no mid-water noise or clutter. The S5100 is also compatible with Airmar's wide-angle CHIRP transducers; these deliver enhanced coverage of the upper water column, and are a perfect fit for targeting pelagic species. Wide-angle transducers are also useful in shallow water, where traditional narrow beam angles can provide limited bottom coverage. A wider coverage area not only speeds your search, but means individual fish targets are easier to see.

### Plug-and-Play Display Compatibility

The S5100 can be used to add sonar capabilities to a modular Simrad display system, or to provide additional sonar capabilities on multifunction displays or fish finders with built-in sounder technology. High-speed Ethernet connectivity enables easy installation almost anywhere on board, on vessels of any size.

### Features :

- Three fully independent sonar channels
  - High-resolution, noise-free clarity at all depth ranges
  - Combine any three CHIRP frequency ranges to target multiple depths
  - Compatible with wide-angle transducers for greater coverage
  - Simultaneous split-screen viewing of multiple depth ranges
  - Maximum depth of 3,000 metres / 10,000 feet (transducer dependent)
  - Plug-and-play 9-pin transducer connectors for easy installation
- 

### Disclaimer

Our company offers the details of this vessel in good faith but cannot guarantee or warrant the accuracy of this information nor warrant the condition of the vessel. A buyer should instruct his agents and/or surveyors to investigate such details buyer desires validated. This vessel is offered subject to prior sale, price change or withdrawal without notice.